



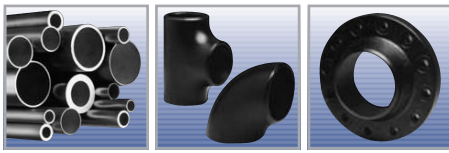
Wall Thickness ANSI B36-10 and B36-19

Nominal Pipe Size		Outside Diameter		Schedule 5S		Schedule 10S		Schedule 10		Schedule 20		Schedule 30		Schedule STD		Schedule 40		Schedule 40S	
in.	metric*	in.	mm	in.	mm	in.	mm	in.	mm	in.	mm	in.	mm	in.	mm	in.	mm	in.	mm
1/8	6	0.405	10.3	-	-	0.049	1.24	-	-	-	-	-	-	0.068	1.73	0.068	1.73	0.068	1.73
1/4	8	0.540	13.7	-	-	0.065	1.65	-	-	-	-	-	-	0.088	2.24	0.088	2.24	0.088	2.24
3/8	10	0.675	17.1	-	-	0.065	1.65	-	-	-	-	-	-	0.091	2.31	0.091	2.31	0.091	2.31
1/2	15	0.840	21.3	0.065	1.65	0.083	2.11	-	-	-	-	-	-	0.109	2.77	0.109	2.77	0.109	2.77
3/4	20	1.050	26.7	0.065	1.65	0.083	2.11	-	-	-	-	-	-	0.113	2.87	0.113	2.87	0.113	2.87
1	25	1.315	33.4	0.065	1.65	0.109	2.77	-	-	-	-	-	-	0.133	3.38	0.133	3.38	0.133	3.38
1 1/4	32	1.660	42.2	0.065	1.65	0.109	2.77	-	-	-	-	-	-	0.140	3.56	0.140	3.56	0.140	3.56
1 1/2	40	1.900	48.3	0.065	1.65	0.109	2.77	-	-	-	-	-	-	0.145	3.68	0.145	3.68	0.145	3.68
2	50	2.375	60.3	0.065	1.65	0.109	2.77	-	-	-	-	-	-	0.154	3.91	0.154	3.91	0.154	3.91
2 1/2	65	2.875	73.0	0.083	2.11	0.120	3.05	-	-	-	-	-	-	0.203	5.16	0.203	5.16	0.203	5.16
3	80	3.500	88.9	0.083	2.11	0.120	3.05	-	-	-	-	-	-	0.216	5.49	0.216	5.49	0.216	5.49
3 1/2	-	4.000	101.6	0.083	2.11	0.120	3.05	-	-	-	-	-	-	0.226	5.74	0.226	5.74	0.226	5.74
4	100	4.500	114.3	0.083	2.11	0.120	3.05	-	-	-	-	-	-	0.237	6.02	0.237	6.02	0.237	6.02
5	125	5.563	141.3	0.109	2.77	0.134	3.40	-	-	-	-	-	-	0.258	6.55	0.258	6.55	0.258	6.55
6	150	6.625	168.3	0.109	2.77	0.134	3.40	-	-	-	-	-	-	0.280	7.11	0.280	7.11	0.280	7.11
8	200	8.625	219.1	0.109	2.77	0.148	3.76	-	-	0.250	6.35	0.277	7.04	0.322	8.18	0.322	8.18	0.322	8.18
10	250	10.750	273.1	0.134	3.40	0.165	4.19	-	-	0.250	6.35	0.307	7.80	0.365	9.27	0.365	9.27	0.365	9.27
12	300	12.750	323.9	0.156	3.96	0.180	4.57	-	-	0.250	6.35	0.330	8.38	0.375	9.53	0.406	10.31	0.375	9.53
14	350	14.000	355.6	0.156	3.96	0.188	4.78	0.250	6.35	0.312	7.92	0.375	9.53	0.375	9.53	0.438	11.13	-	-
16	400	16.000	406.4	0.165	4.19	0.188	4.78	0.250	6.35	0.312	7.92	0.375	9.53	0.375	9.53	0.500	12.70	-	-
18	450	18.000	457.0	0.165	4.19	0.188	4.78	0.250	6.35	0.312	7.92	0.438	11.13	0.375	9.53	0.562	14.27	-	-
20	500	20.000	508.0	0.188	4.78	0.218	5.54	0.250	6.35	0.375	9.53	0.500	12.70	0.375	9.53	0.594	15.09	-	-
22	550	22.000	559.0	0.188	4.78	0.218	5.54	0.250	6.35	0.375	9.53	0.500	12.70	0.375	9.53	-	-	-	-
24	600	24.000	610.0	0.218	5.54	0.250	6.35	0.250	6.35	0.375	9.53	0.562	14.27	0.375	9.53	0.688	17.48	-	-
26	650	26.000	660.0	-	-	-	-	0.312	7.92	0.500	12.70	-	-	0.375	9.53	-	-	-	-
28	700	28.000	711.0	-	-	-	-	0.312	7.92	0.500	12.70	0.625	15.88	0.375	9.53	-	-	-	-
30	750	30.000	762.0	0.250	6.35	0.312	7.92	0.312	7.92	0.500	12.70	0.625	15.88	0.375	9.53	-	-	-	-
32	800	32.000	813.0	-	-	-	-	0.312	7.92	0.500	12.70	0.625	15.88	0.375	9.53	0.688	17.48	-	-
34	-	34.000	864.0	-	-	-	-	0.312	7.92	0.500	12.70	0.625	15.88	0.375	9.53	0.688	17.48	-	-
36	900	36.000	914.0	-	-	-	-	0.312	7.92	0.500	12.70	0.625	15.88	0.375	9.53	0.750	19.05	-	-
38	-	38.000	965.0	-	-	-	-	-	-	-	-	-	-	0.375	9.53	-	-	-	-
40	1000	40.000	1016.0	-	-	-	-	-	-	-	-	-	-	0.375	9.53	-	-	-	-
42	1100	42.000	1067.0	-	-	-	-	-	-	-	-	-	-	0.375	9.53	-	-	-	-
44	-	44.000	1118.0	-	-	-	-	-	-	-	-	-	-	0.375	9.53	-	-	-	-
46	-	46.000	1168.0	-	-	-	-	-	-	-	-	-	-	0.375	9.53	-	-	-	-
48	1200	48.000	1219.0	-	-	-	-	-	-	-	-	-	-	0.375	9.53	-	-	-	-

NOTE:* Metric Nominal Pipe Size is according to MSS SP-86
 Other types, sizes and thicknesses of fittings on application.

EXPLANATION

- STD and Schedule 40 are equal in wall thickness up through 10".
- XS and Schedule 80 are equal in wall thickness up through 8".
- In 12", Schedule 40S is equal to STD, not to Schedule 40.
 In 10" and 12", Schedule 80S is equal to XS, not to Schedule 80.



Compilation of technical data.
PAI does not assume any responsibility.

Schedule 60		Schedule XS		Schedule 80		Schedule 80S		Schedule 100		Schedule 120		Schedule 140		Schedule 160		Schedule XXS		Nominal Pipe Size	
in.	mm	in.	mm	in.	mm	in.	mm	in.	mm	in.	mm	in.	mm	in.	mm	in.	mm	in.	metric
-	-	0.095	2.41	0.095	2.41	0.095	2.41	-	-	-	-	-	-	-	-	-	-	1/8	6
-	-	0.119	3.02	0.119	3.02	0.119	3.02	-	-	-	-	-	-	-	-	-	-	1/4	8
-	-	0.126	3.20	0.126	3.20	0.126	3.20	-	-	-	-	-	-	-	-	-	-	3/8	10
-	-	0.147	3.73	0.147	3.73	0.147	3.73	-	-	-	-	-	-	0.188	4.78	0.294	7.47	1/2	15
-	-	0.154	3.91	0.154	3.91	0.154	3.91	-	-	-	-	-	-	0.219	5.56	0.308	7.82	3/4	20
-	-	0.179	4.55	0.179	4.55	0.179	4.55	-	-	-	-	-	-	0.250	6.35	0.358	9.09	1	25
-	-	0.191	4.85	0.191	4.85	0.191	4.85	-	-	-	-	-	-	0.250	6.35	0.382	9.70	1 1/4	32
-	-	0.200	5.08	0.200	5.08	0.200	5.08	-	-	-	-	-	-	0.281	7.14	0.400	10.15	1 1/2	40
-	-	0.218	5.54	0.218	5.54	0.218	5.54	-	-	-	-	-	-	0.344	8.74	0.436	11.07	2	50
-	-	0.276	7.01	0.276	7.01	0.276	7.01	-	-	-	-	-	-	0.375	9.53	0.552	14.02	2 1/2	65
-	-	0.300	7.62	0.300	7.62	0.300	7.62	-	-	-	-	-	-	0.438	11.13	0.600	15.24	3	80
-	-	0.318	8.08	0.318	8.08	0.318	8.08	-	-	-	-	-	-	-	-	-	-	3 1/2	-
-	-	0.337	8.56	0.337	8.56	0.337	8.56	-	-	0.438	11.13	-	-	0.531	13.49	0.674	17.12	4	100
-	-	0.375	9.53	0.375	9.53	0.375	9.53	-	-	0.500	12.70	-	-	0.625	15.88	0.750	19.05	5	125
-	-	0.432	10.97	0.432	10.97	0.432	10.97	-	-	0.562	14.27	-	-	0.719	18.26	0.864	21.95	6	150
0.406	10.31	0.500	12.70	0.500	12.70	0.500	12.70	0.594	15.09	0.719	18.26	0.812	20.62	0.906	23.01	0.875	22.23	8	200
0.500	12.70	0.500	12.70	0.594	15.09	0.500	12.70	0.719	18.26	0.844	21.44	1.000	25.40	1.125	28.58	1.000	25.40	10	250
0.562	14.27	0.500	12.70	0.688	17.48	0.500	12.70	0.844	21.44	1.000	25.40	1.125	28.58	1.312	33.32	1.000	25.40	12	300
0.594	15.09	0.500	12.70	0.750	19.05	-	-	0.938	23.83	1.094	27.79	1.250	31.75	1.406	35.71	-	-	14	350
0.656	16.66	0.500	12.70	0.844	21.44	-	-	1.031	26.19	1.219	30.96	1.438	36.53	1.594	40.49	-	-	16	400
0.750	19.05	0.500	12.70	0.938	23.83	-	-	1.156	29.36	1.375	34.93	1.562	39.67	1.781	45.24	-	-	18	450
0.812	20.62	0.500	12.70	1.031	26.19	-	-	1.281	32.54	1.500	38.10	1.750	44.45	1.969	50.01	-	-	20	500
0.875	22.23	0.500	12.70	1.125	28.58	-	-	1.375	34.93	1.625	41.28	1.875	47.63	2.125	53.98	-	-	22	550
0.969	24.61	0.500	12.70	1.219	30.96	-	-	1.531	38.89	1.812	46.02	2.062	52.37	2.344	59.54	-	-	24	600
-	-	0.500	12.70	-	-	-	-	-	-	-	-	-	-	-	-	-	-	26	650
-	-	0.500	12.70	-	-	-	-	-	-	-	-	-	-	-	-	-	-	28	700
-	-	0.500	12.70	-	-	-	-	-	-	-	-	-	-	-	-	-	-	30	750
-	-	0.500	12.70	-	-	-	-	-	-	-	-	-	-	-	-	-	-	32	800
-	-	0.500	12.70	-	-	-	-	-	-	-	-	-	-	-	-	-	-	34	-
-	-	0.500	12.70	-	-	-	-	-	-	-	-	-	-	-	-	-	-	36	900
-	-	0.500	12.70	-	-	-	-	-	-	-	-	-	-	-	-	-	-	38	-
-	-	0.500	12.70	-	-	-	-	-	-	-	-	-	-	-	-	-	-	40	1000
-	-	0.500	12.70	-	-	-	-	-	-	-	-	-	-	-	-	-	-	42	1100
-	-	0.500	12.70	-	-	-	-	-	-	-	-	-	-	-	-	-	-	44	-
-	-	0.500	12.70	-	-	-	-	-	-	-	-	-	-	-	-	-	-	46	-
-	-	0.500	12.70	-	-	-	-	-	-	-	-	-	-	-	-	-	-	48	1200